



# The New St Josephs Church: St Josephs Papanui Redevelopment

## Proposed Church, Pastoral Centre, Pastoral Assembly, and Presbytery

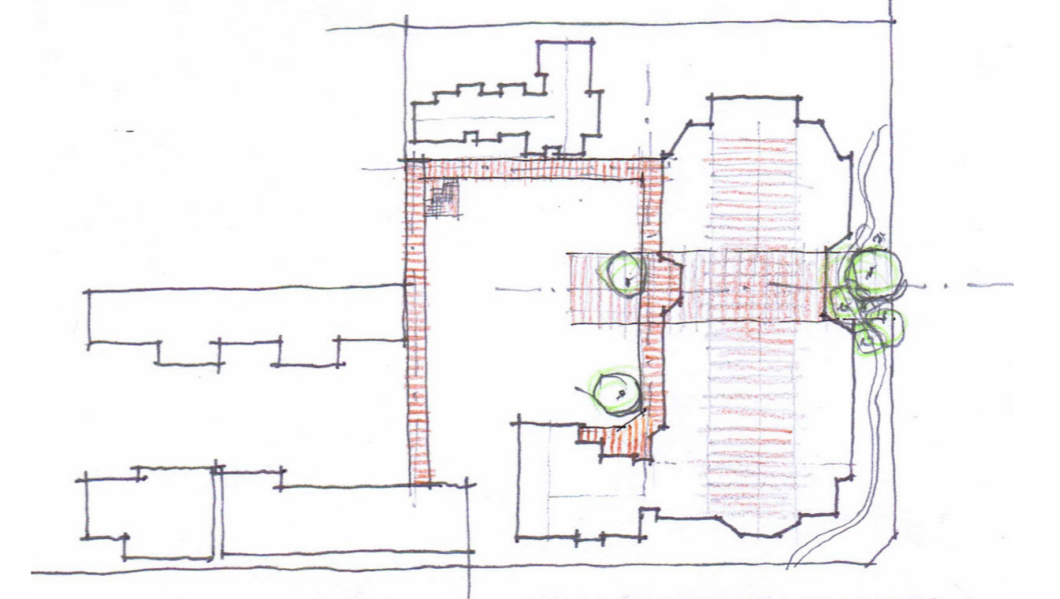
November 2015

David Smith Architects in association with Southcombe Architects,  
Powell Fenwick Consulting Engineers, and Aecom Davis Langdon Quantity Surveyors.



Overview of the Community Courtyard, Presbytery, Pastoral Assembly, Main Church and Pastoral Centre, with St Josephs School in the right.

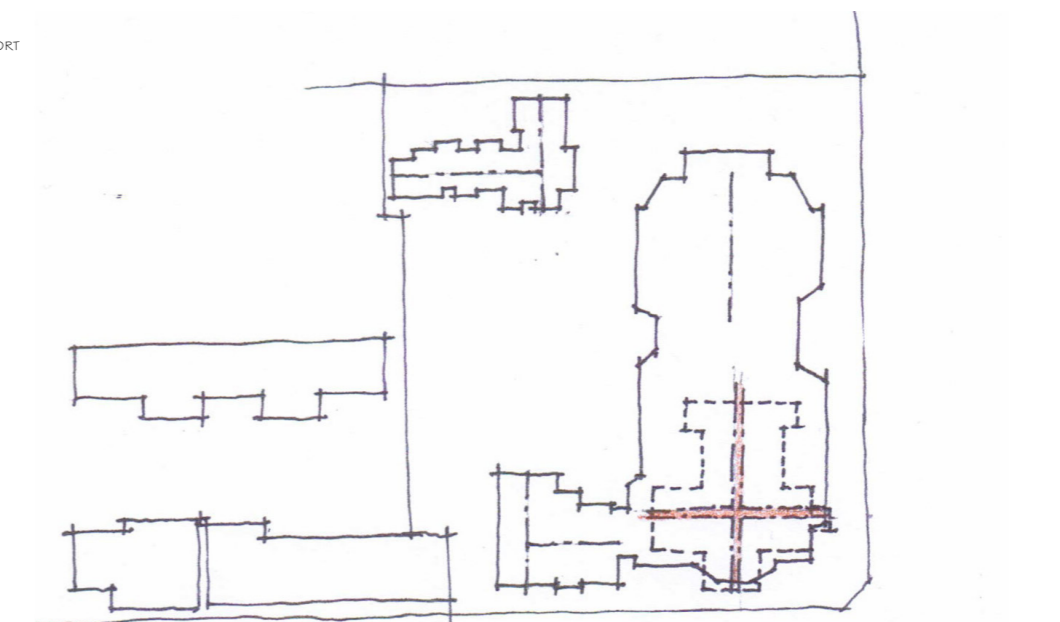
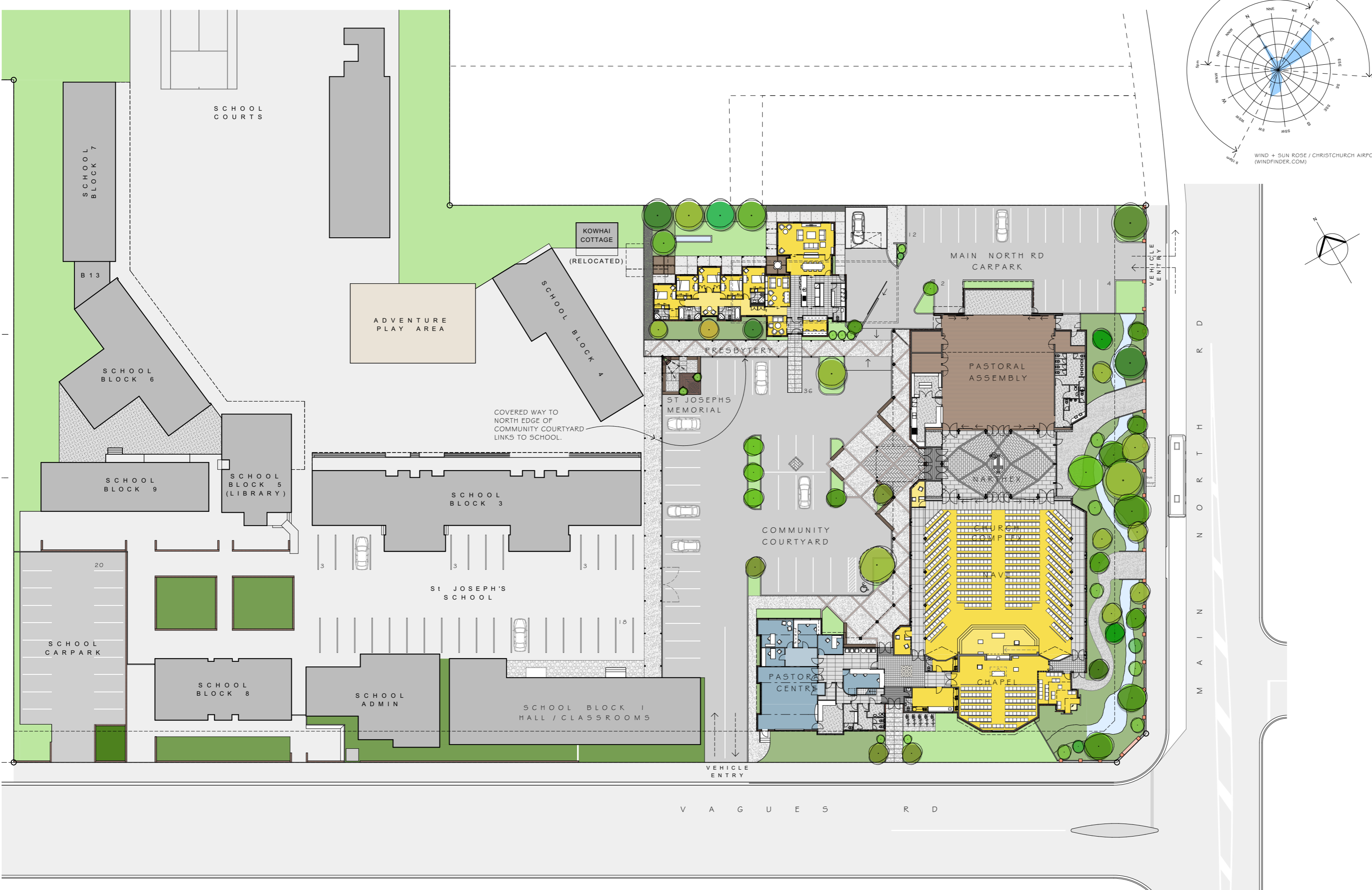
The site is planned as an *integrated community of buildings gathered around a central courtyard or Church Forecourt*. The buildings including the school are linked with a perimeter ground level path and covered way verandah. The existing Pastoral Centre Building is retained with minor remodelling and addition, and forms the southern edge of the courtyard. The Pastoral Centre is linked directly to the new Church building that forms the east edge to the courtyard along the Main North Road boundary. A new Presbytery building forms the north side to the courtyard, and new covered ways to the existing school form the western edge of the courtyard.



### Church Forecourt as Community Courtyard

The Church, Chapel and Adoration Chapel are located in one Church building on the prominent southeast corner of the site previously occupied by the old Church. This location gives a *continuity of tradition* over time. It also reflects the need to address the street corner and provide a visible Catholic presence to the wider Papanui and Christchurch communities as so effectively occurred with the old Church. The continuity of tradition is reinforced through the use of similar brick, stone and heavy timbered ceilings used in the original Church, the use of the same 45 degree sloped gable roof, and the use of the cross-gable form adopted for Catholic Churches since the Renaissance to represent the Church as the Body of Christ.

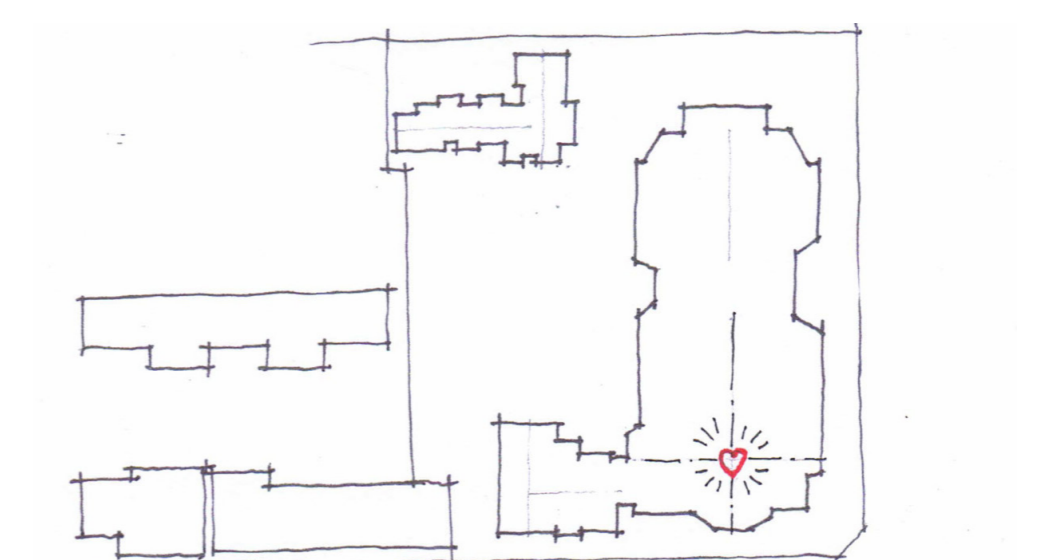
The corner site location of the Church also provides the most favourable orientation in terms of shelter from wind and access to the sun for gathering after liturgical celebrations, and also shelters the public courtyard space from the noise of the adjoining roads and safety issues associated with the adjacent stream. While this location of the Church is less prominent from the courtyard, the Church is highly visible and has priority from the courtyard from the scale of its high cross gable roof, its finishes, detail and design. The prominence of elements such as the Church Entry Portico, and the major stained glass windows and coloured glass clerestory windows all combine to give the Church clear presence.



Continuity of Tradition showing the existing Church and the New Church locations.

### Church

Major Church spaces include Nave, Sanctuary, Sacristies, Reconciliation rooms and the Narthex. The Nave and Narthex are the big spaces and have been positioned parallel to the Main North Road set back from the Kruse Waterway on the site east boundary. The Sanctuary is located on the main north south axis at the southern end of the Nave with the tabernacle as the central and clear focal point. The design of the whole Church building is focused on the tabernacle in the centre of the Nave beyond the Altar, the idea of *the Eucharist at the Heart*. The Chapel is located on Vagues Road immediately beyond the Sanctuary of the Church and shares direct access to the tabernacle which is the focal point to both spaces.



The Eucharist at the Heart.

### Proposed Site Plan



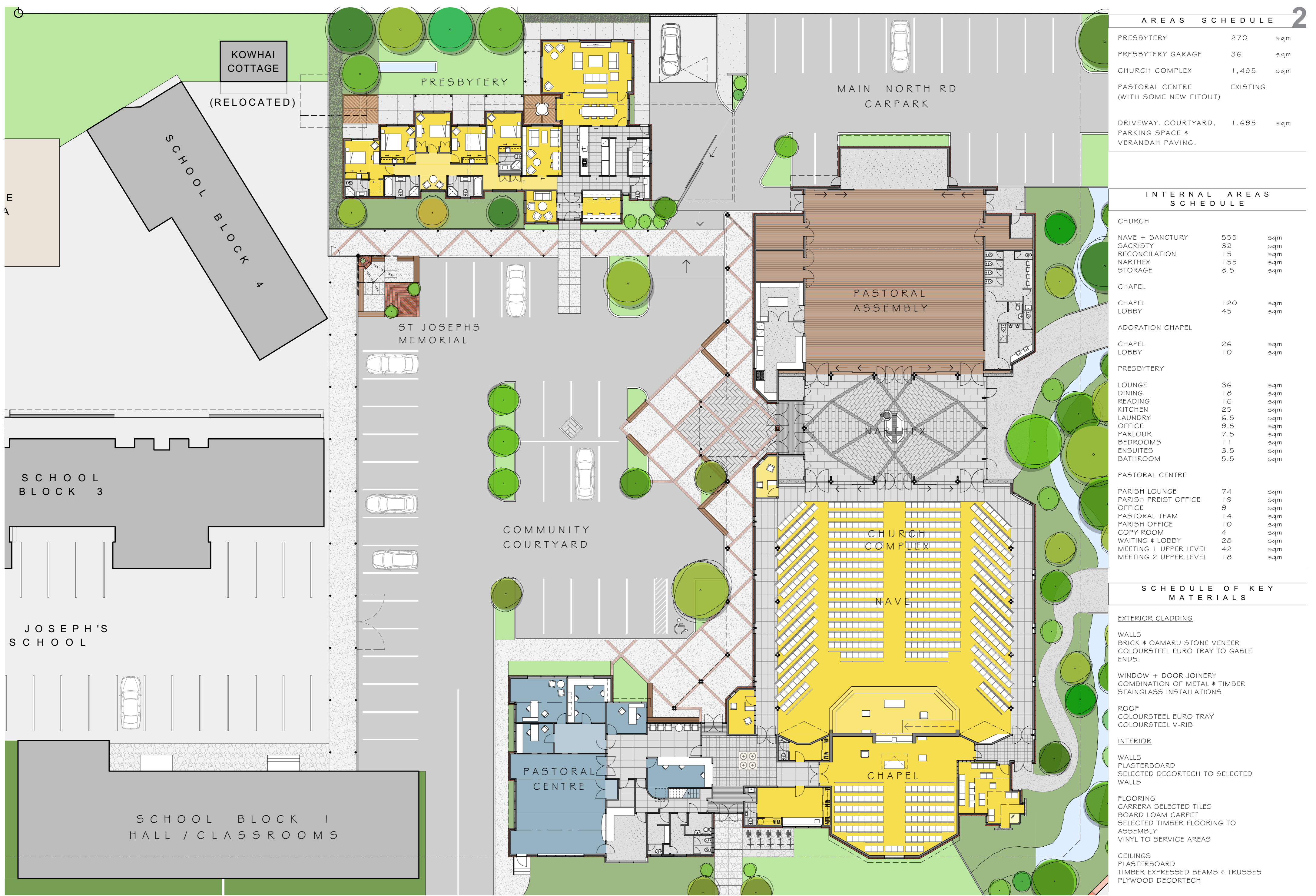
St Josephs Church from the courtyard as we remember it.



Courtyard from the Church Entrance Portico towards the St Joseph Shrine and School.



The Courtyard from the St Josephs Shrine.



Proposed Ground Floor Plan, material and areas schedules.

### Church

The main focus of the sanctuary is twofold. The focus of the Church on the Tabernacle is primary, but this is augmented by the position of the Altar in front of the tabernacle on axis allowing the appropriate focus during the Liturgy of the Eucharist. Natural lighting is focused over the Altar and washing down the wall behind the sanctuary to create a sense of ascension and dematerialisation of the wall. The Tabernacle is housed in a deep niche on a small Carrara marble side altar with a luminous 30mm Carrara marble screen beyond. The screen transmits light between the Church and Chapel.

On the left side of the nave looking towards the sanctuary is a Marian Shrine. The right side has a devotional area dedicated to the St Joseph Icon. These spaces are both top lit with natural skylights providing soft indirect light from hidden clerestory windows over. Both of these devotional focus areas are given priority within the design by creating niches that accentuate a sense of depth within the wall space. There is ample space for flowers and votive candles to accentuate the focus on the shrines, and to accommodate kneelers. Through careful use of indirect light, noble materials, colour associated with Mary within the Church, plinth and icon stand design detailing, and the positioning of the focal points to these devotional shrines, a sense of sacred spaces within the space of the main Church is created.

Other special design elements within the design include an Ambry located in the pastoral centre side of the Sanctuary accessible from both the chapel and the main church, stained glass windows to the west and east gables helping to create a sense of the sacred via an ambiance created from reflected coloured light and the traditional design of the windows themselves. These elements are shown diagrammatically within the design and would be the subject of focused detail design work in association with Catholic Artists and the parish. Clerestory windows would also be a combination of special glasses, coloured and Flemish, and all translucent with sandblasted images and text in association with the parish and a selected Catholic artist(s). Reconciliation rooms are both to the west, one at the front of the Church and the other towards the rear, both accessed off the ambulatory side aisle of the Church. Both will have divisions within as privacy grilles and will have small special stained glass windows to facilitate a sense of the numinous within the spaces.



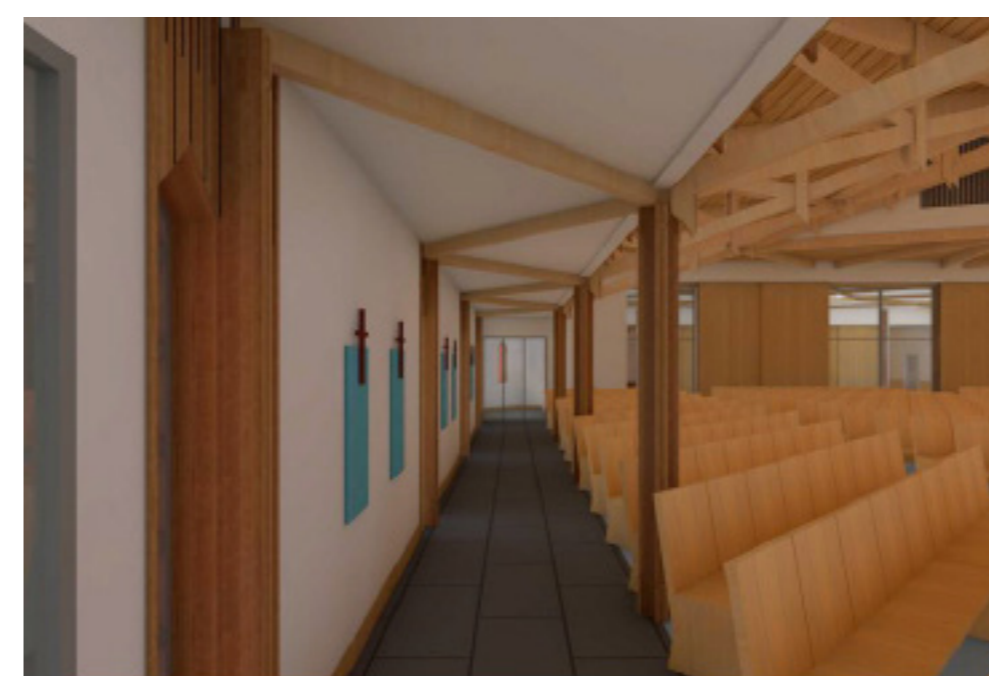
Nave of Church from Entrance. Tabernacle in the centre, Marian Shrine on the left and St Josephs Icon on the right.



St Josephs Church interior as we remember it



Possible alternative roof structure design



Church Ambulatory Side Aisles

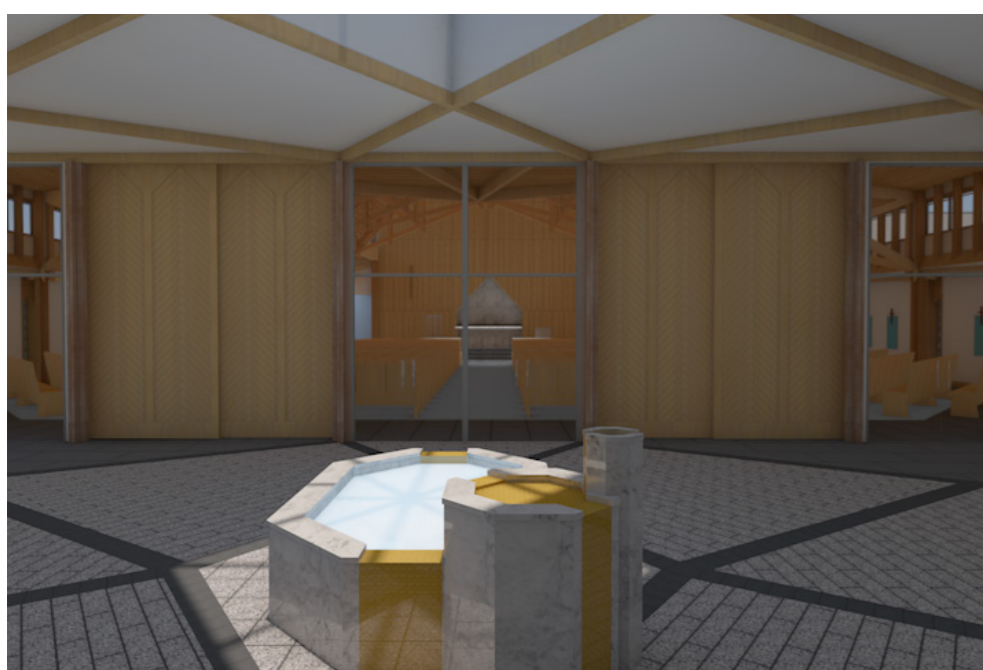
Church

Circulation is provided within the Nave by a wide central aisle, a secondary seating access aisle, and two side colonnaded ambulatories. A range of seating layouts and sub aisle arrangements are possible with design development and may be further discussed and developed with the Church Planning group and liturgical commission. A balance between formality, geometry, access, distance and vision is needed to create the most favourable proportions to ensure the greatest opportunity for active participation of the faithful in the liturgies. A possible alternative layout is shown below. It tends to gather the congregation more around the altar, but is less formal. Possible extensions of the seating numbers into the narthex and parish assembly areas are also shown below. Nave seating for 530 fixed seats is provided allowing for music groups and a choir which can be located to a side of the church in the front, in a similar position at the rear, or in a possible choir loft with the organ to be added to the rear of the church. Seating is expandable into circulation spaces or the Narthex by the use of sliding wall panels retracting into pockets either side of the Nave. This accommodates up to 150 extra seats on loose chairs. There is also ample space for standing and loose chairs within the nave if required. Similarly seating can extend from the Narthex into the Pastoral Assembly space with additional loose seating up to and exceeding the 900 specified in the brief. Storage space for loose seating is provided on either side of the Narthex Entrance lobby and within the assembly space.



Narthex from Entrance with view to Baptismal with dappled light from above, landscaping and stream beyond, and Church entry on the right.

Discrete secondary access to the Church is available each side of the sanctuary. The left side facing the sanctuary gives access to the Adoration Chapel and direct access from Main North Road. On the right side of the sanctuary a Chapel Lobby is located between the Church Chapel and Pastoral Centre. There is direct access to this lobby from Vagues Road and the main courtyard. The lobby also provides direct access to the Sacristy from the Church and Chapel.



Narthex with closed doors to Church.



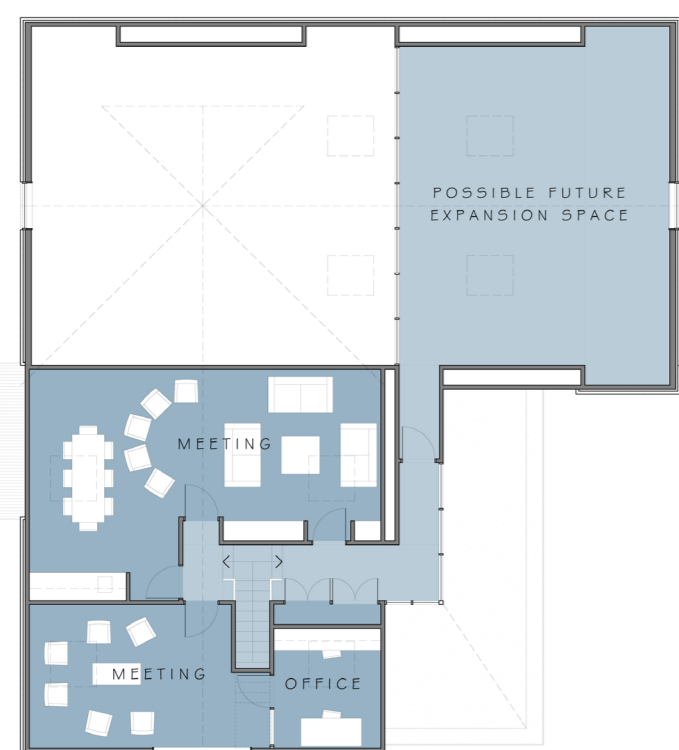
Narthex with open doors and extended seating.



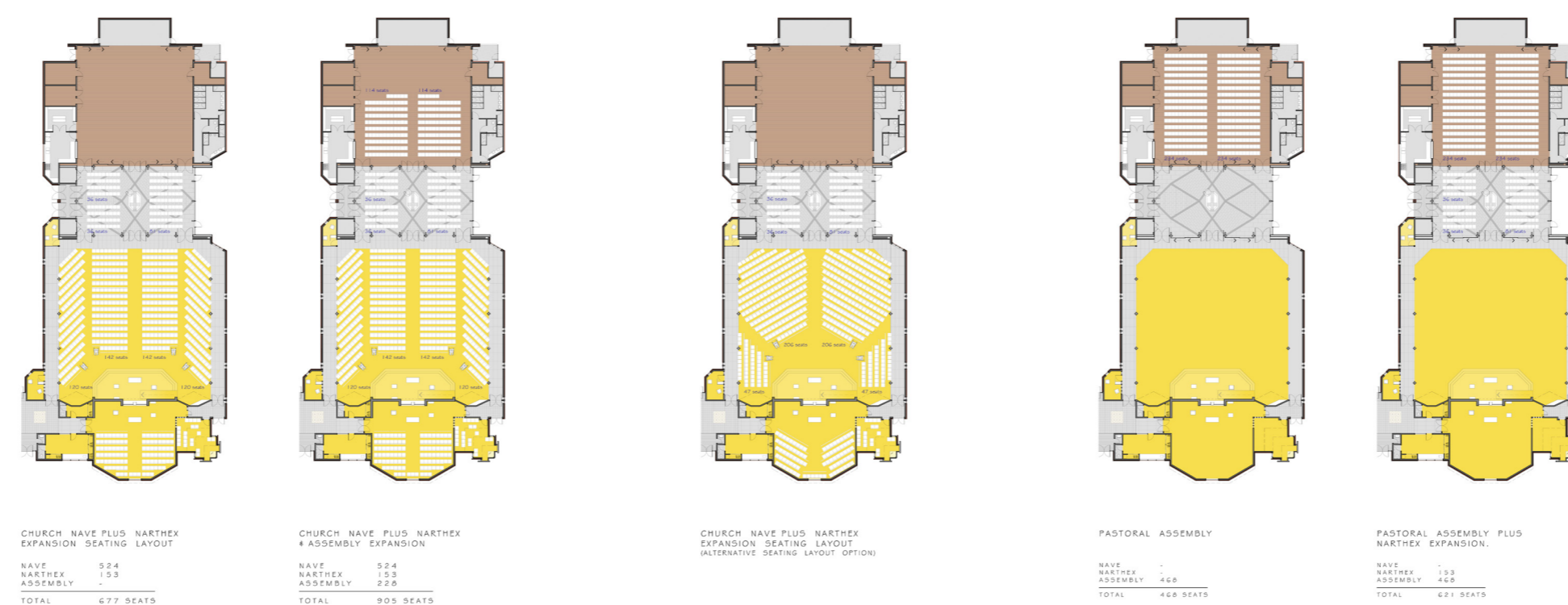
Seating for 900 extends into Pastoral Assembly.

Narthex

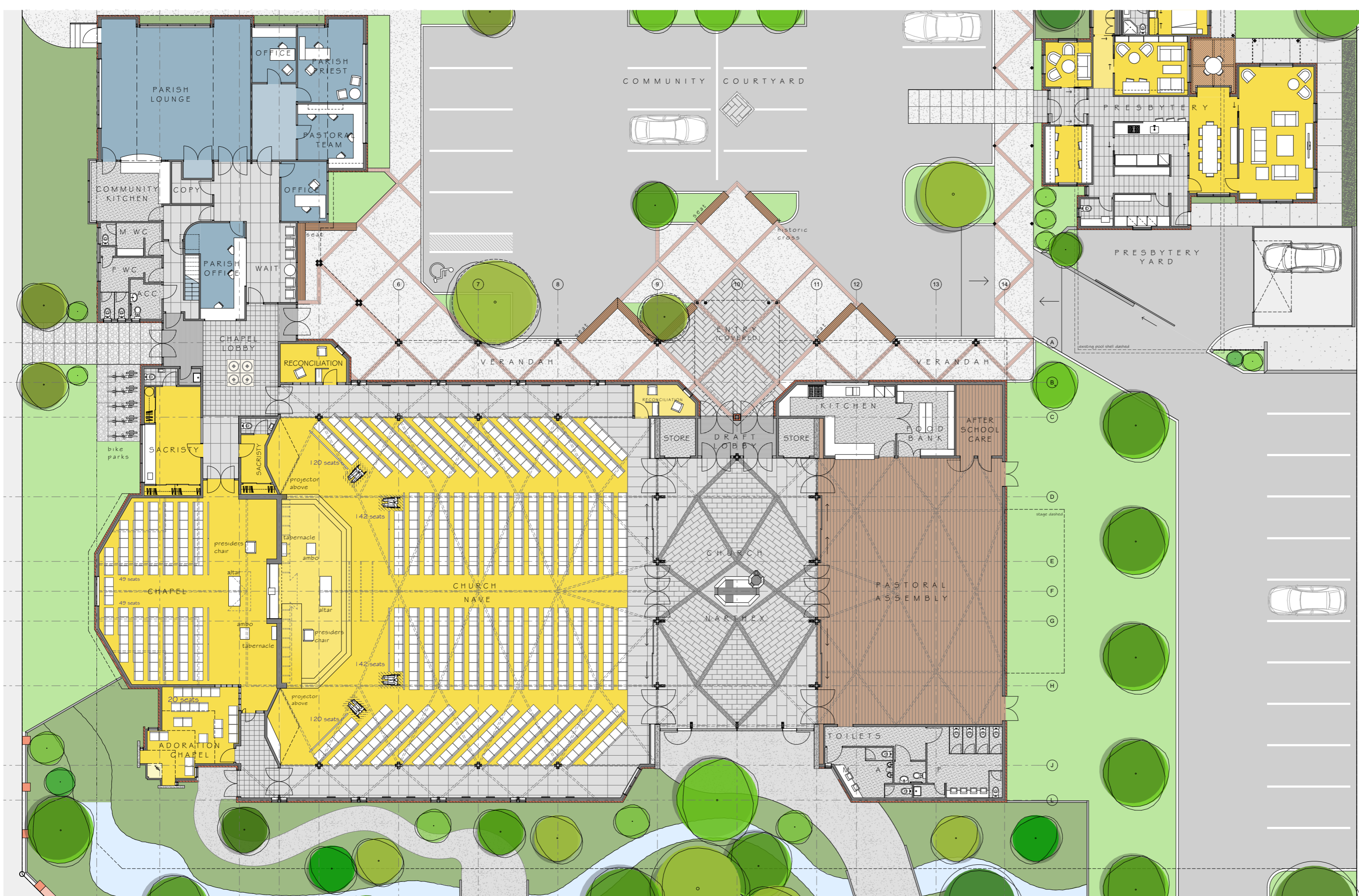
The Narthex is at the north of the Church and its entry is prominent from the Parish Courtyard. Entry proceeds through a lobby. The Narthex is located to take advantage of one of the site's most beautiful existing characteristics – the bend in the Kruse stream and the pocket of major trees near what is currently the entrance to the existing presbytery. These trees and the stream will form the backdrop to the Narthex reminding us that this church is grounded in the waters, stone, and local environment of Papanui; a Church of and intimately connected to this particular place. The existing bridges will form alternative access points to the main Church as they did with the old Church.



Remodelled First Floor to the Pastoral Centre.



Large liturgical events seating, Possible alternative seating option, and Pastoral Assembly seating.



Possible Stage one for the Ground Floor of the Church, Chapel, Adoration Chapel, Pastoral Centre, Pastoral Assembly and Community Courtyard.

The Baptismal is located centrally to the Narthex on axis to the Church. There is a beautiful roof light directly above the Baptismal designed to give a sense of dappled light. The roof design and flooring all radiate from the Baptismal and give appropriate focus to it. A Baptismal location near the entrance to the Church is appropriate liturgically and will facilitate liturgies associated with the Baptism with sufficient space to accommodate gathering around the Baptismal. The Baptismal design reinterprets traditional octagonal baptismals. It incorporates the idea of passing through the waters of Baptism into the Church. It also incorporates living water flowing from a stoup where parishioners are reminded of their baptism through blessing themselves with water from the font. Water from the stoup flows to a font at the scale appropriate for infant baptism from where it flows to a shallow baptismal for Adults. Water flows over tiny glass mosaics of clear pure water colours and with gold mosaic highlights. The main baptismal floor is raised within the baptismal to raise the height of the candidate and ease the process of baptism for the priest. This also keeps the water level shallow for safety and allows the sides of the baptismal to be high enough to be safe from being a trip hazard and from needing high grilles to fence it off. The Narthex gives direct access into the Nave and the Pastoral Assembly space. Large timber doors slide into pockets giving some traditional character to the space and some visual separation between spaces when they are closed. The open doors, in combination with frameless glass entry doors to the church, allow clear vision and extension of the Church seating to occur into the Narthex and the assembly space if needed for major liturgical events. This flexible arrangement also allows the Pastoral assembly area to be expanded into the Narthex if required for a major pastoral event.



Nave of Church from Side Aisle with stained glass windows and sanctuary.



St Josephs Church interior as we remember it



Chapel.



Adoration Chapel.

## Chapel

The Chapel location directly behind the main Church Sanctuary has easy and direct access from the Chapel Lobby for weekday and smaller liturgies. The chapel is a smaller version of the main church nave and shares some important attributes. It is a high space with timber ceilings and leadlight windows to the east and west, and similar indirect light washing down the wall behind the sanctuary to create a sense of ascension. The Tabernacle is given prominence as the focal point of the space on a projecting small Carrara Marble plinth with a luminous 30mm Carrara Marble screen beyond transmitting light between the Chapel and Church. A particular focal point of the Chapel is a large leadlight window on the Chapel central axis in the centre of the wall to Vagues Road. This traditional window will be a focal point both internally for the Chapel and externally, particularly at night. Sacristies are located nearby to conveniently serve the Chapel and Church. Fixed seating for 100 is provided in a more intimate scale and setting to the larger main Church. The Chapel is adjacent to The Adoration Chapel.

## Adoration Chapel

The Adoration Chapel is between the Chapel and the Church Nave. It is symmetrically oriented to address the highly visible southeast corner of the site, and mediate between the forms of the Church and Chapel. Parishioners will recognise the Adoration Chapel as being clearly expressed on the exterior of the Church. The light spire location also identifies the position of the Blessed Sacrament within the Adoration Chapel below. The Adoration Chapel is an intimate scaled space suited to personal prayer. The vertical scale of the space increases from a low 2.25metres at the edge of the Chapel towards a focal Altar. Indirect light is focused directly over the Blessed Sacrament. The planning of the Adoration Chapel is intended to facilitate the sense of increasing closeness. There is space for kneelers or seats near the Altar, and also space for Statues, flowers and accessibility. Small cast glass windows each side of the focal Altar will introduce a beautiful diffuse soft warm coloured light that will create a unique visual atmosphere to the front area of the Chapel. The design of these intimately scaled cast glass elements will include text and images to be determined with the client group and advisors as the design develops.

Access to the Adoration Chapel is through the main Church Nave, the Chapel, or from a separate exterior door and porch that lead to an Adoration Chapel Lobby. A serpentine path will link the Adoration Chapel lobby to one of the original bridges on Main North Road.

## Presbytery

The Presbytery is located at the northern end of the Community Courtyard and is a modest one level dwelling configured as a living wing and an accommodation wing. A steep roof pitch split into two parts will match at a smaller scale the design and materials of the Church and Pastoral Centre. A home office and parlour located either side of a entry lobby will give a slight separation of parish activities from the Priests home domain yet still be readily accessible from it. The kitchen and service areas of the home are designed to facilitate care by a housekeeper if required.

The living wing is to the east of the accommodation wing and extends to the north forming a courtyard with easterly shelter. The living areas and bedrooms face out to this courtyard. The living area includes a formal lounge facing west and looking along the serene landscaped garden. It also includes an adjacent dining room, kitchen and service spaces, and a library designed to double up as a withdrawal and retreat, or prayer space. The Bedrooms include semi private exterior landscape spaces at the thresholds to the garden. A secure vehicle courtyard and garage with a private back yard is located to the northeast.

The building construction is of timber frame with the exterior finish including brick veneer, Oamaru stone, metal windows and wide tray roofing and will match the appearance of the other buildings.



Presbytery Floor Plan with common and private areas, and private landscaped garden beyond.



Community Courtyard towards Presbytery with St Josephs Shrine, seats, landscaping and memorial, and covered way to School. The main covered entrance to the school is beside the St Joseph Shrine.



PROPOSED PRESBYTERY WEST ELEVATION



PROPOSED PRESBYTERY SOUTH ELEVATION



PROPOSED PRESBYTERY NORTH ELEVATION

Presbytery Elevations from Community Courtyard (South), and from private landscaped garden (North and West).

Pastoral Assembly

The Pastoral Assembly space is designed to meet the aspiration parts of the brief and can be realised in stages if required. This Assembly space is located immediately adjacent to the Narthex on the central axis of the Church and Narthex. It is designed to be able to accommodate additional seating for the Church or to operate as a separate space in association with the Narthex or with access from the North. The Pastoral assembly space is expandable into the Narthex in a similar manner to the Church with similar doors. A new Commercial Kitchen and associated Food Bank flank the Pastoral Assembly on the west side with additional storage space to facilitate multiple use of the space. The major new Toilet facilities are positioned on the other opposite side of Assembly area to provide for all the key building elements. Cleaner's facilities are also included. There is a stage area with wide sliding doors so the stage can double up as a chair store when not in use as a stage. The Pastoral Assembly space is designed to be part of the community of buildings around the main courtyard to a lower and smaller scale than the Church with similar forms and roof and more robust and utilitarian interior finishes.

Pastoral Centre

Minor additions and alterations are proposed to the existing Pastoral Centre to provide for the office and meeting space required along with the provision of an additional facility we have called the Parish Lounge. This facility will be particularly important in facilitating the operation of small parish groups. An important alteration is a new location for the entry and a linkage through to the new Church and Chapel so the Pastoral Centre and Church can operate as an integrated facility.

New administration and office spaces will be provided by remodelling the northern section of the existing Parish Centre main space that is currently used as the weekday Chapel. The current Entry Lobby and ground level office space are reconfigured to include Parish Office, Copy Room and Waiting Area. The upper level will also have minor alteration forming a new office and with the provision of an upstairs Tea Making facility.

External Landscaping

The proposed concept includes a Church Forecourt or Community Courtyard that is conceived as a liturgical gathering space. It also does double duty and provides vehicle drop of and pick up to the Church, and parking and traffic management to and from Main North and Vagues Roads.

Landscaping works to the courtyard involve covered verandah spaces linking the buildings together and the Church and Presbytery to the school. Sheltered paved areas for outdoor seating and gatherings are provided. A historic cross from the original Church is reinstated as a large permanent version of a processional cross in the central part of the courtyard. Paving to take the form of a ceremonial hearth also occurs in the centre of the courtyard as a site of the initial fire lit for the Easter Vigil.

A memorial Shrine with seating, landscaping, and timber screens with a statue of Saint Joseph and memorial bricks from the original Church is located in the North West corner of the courtyard.

Thanks

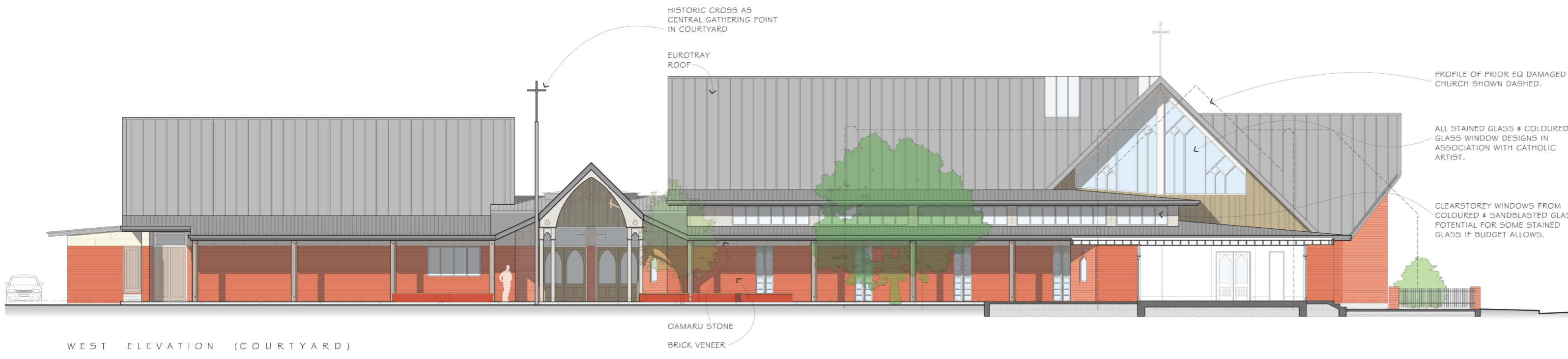
David Smith, Mark Southcombe and the consultant team we have assembled for the project thank the Catholic Parish of St Josephs of Papanui, and the Diocese of Christchurch for the opportunity to design a new Church for you. We hope you enjoy our design response as much as we have enjoyed creating it for you.

DAVIDSMITH•ARCHITECTS

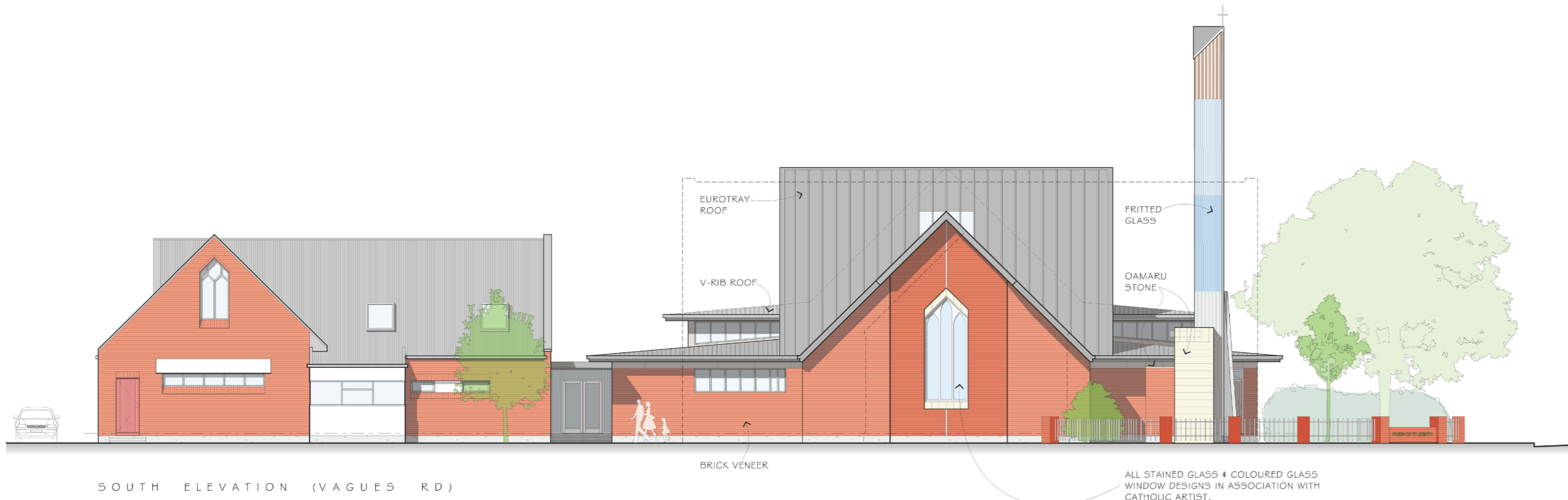
David A Smith Architects Limited  
105B Office Road, Merivale, Christchurch 8014  
Phone 03 379 5811 • www.davidsmitharchitects.co.nz

southcombe architects

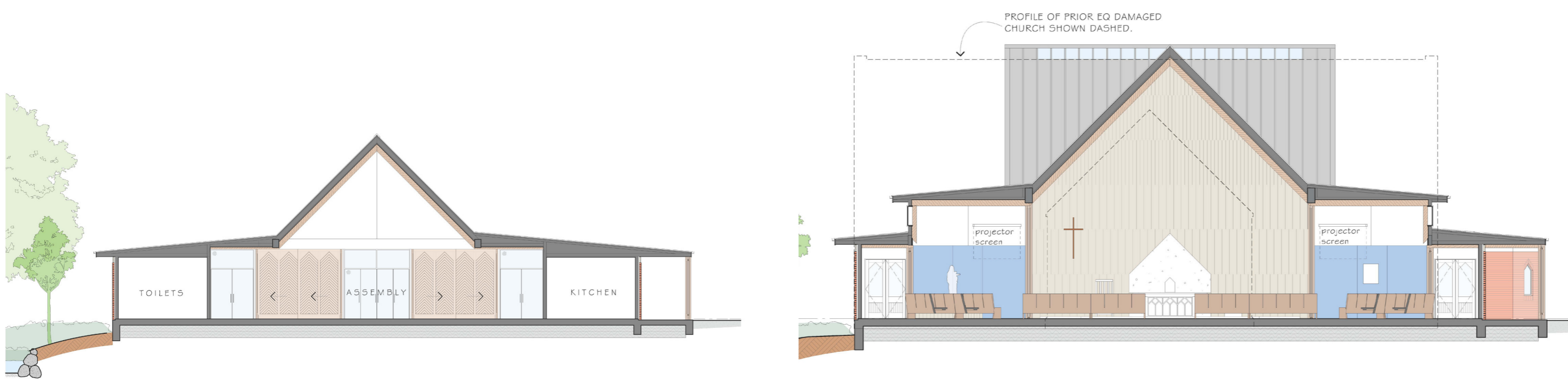
Southcombe Architects Limited  
Box 9227 Marion Square, Wellington  
027 313 1203



Pastoral Assembly, Main Church Entrance Portico, and Church from main Church Forecourt.



Pastoral Centre, Entry to Chapel lobby, Chapel, and Adoration Chapel from Vagues Road.



Cross Section through the Pastoral Assembly spaces.

Cross Section through the Church and Reconciliation Room.



St Josephs Papanui from the Vagues Road, Main Road Corner.



St Josephs Church exterior as we remember it



Chapel and Adoration Chapel.



Church from Main North Road.